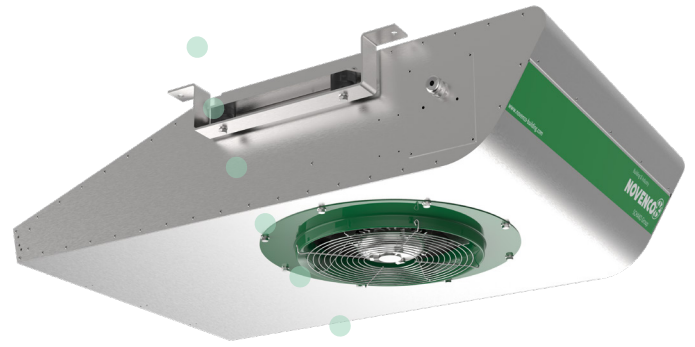


# CAR PARK CENTRY JET FANS CGF 500

Pure competence in air.



## PRODUCT

Centrifugal design jet fans in a unidirectional execution. This range of centrifugal design jet fans excel in low installation heights, high efficiency and low noise levels.

The installation height is only 268mm.

## APPLICATION

These compact and robust jet fans have been developed especially for the use in car parks.

The jet fans have been designed for an optimal capacity, long life span and very reliable operation.

## CONSTRUCTION

The jet fan consists of a flat centrifugal fan Aluzink casing with an inlet cone on the bottom side to minimize the inlet losses. On the inlet side wire guards are mounted. With a special internal deflector the air stream flows in the desired direction. As standard, the jet fans are equipped with mounting feet for direct mounting to the ceiling.

## IMPELLER

The centrifugal impeller is coupled directly onto the motor shaft. All fans are statically and dynamically balanced in accordance with VDI 2060 and ISO 21940-11:2016.

## MOTOR

The motor is two-speed 3x400 Volt, 50 Hz for direct start. Motor protection IP55 in accordance with IEC 34-5. Insulation class F or H depending on temperature protection.

## ELECTRIC ISOLATION

The centrifugal jet fans have a terminal box which is integrated into the fan housing.

## SURFACE TREATMENT

As standard, all jet fans are delivered in an Aluzink execution. In the standard execution the jet fans meet the requirements for operation in unheated, low corrosive environments according to DS/EN ISO 12944-2, corrosion category C3.

## CE MARKING

The jet fans have been designed to comply with all the international machinery safety standards according to EN ISO 14121-1.

## TEMPERATURE RESISTANCE

The standard operating temperature is from -20°C until +40°C. Jet fans for hot smoke removal are certified in accordance to the EN 12101-3 in the classes F200 and F300.

The complete range of centrifugal jet fans has been high temperature tested according to the table below:

Temp.	200°C	300°C
60 min		✓
120 min	✓	✓

High temperature test classes

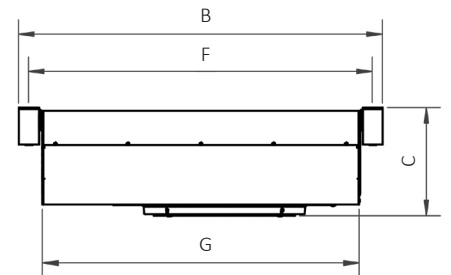
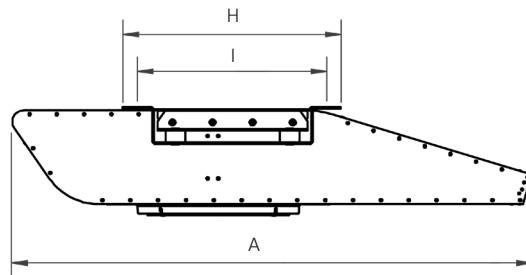
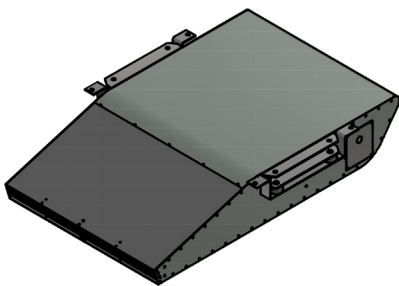
# CAR PARK CENTRY JET FANS CGF 500

JET FAN		CGF 500
Execution	-	Unidirectional
Thrust	N	12 / 50
Sound pressure level *, re. $2 \times 10^{-5}$ Pa	dB(A)	61 / 75
Electrical connection	V, Hz	3x400V, 50Hz

MOTOR DATA (F200120/F30060/ Ff300120)		
Installed motor power	kW	0,3 / 1,2
Nominal current	A	1,3 / 3,5

TOTAL WEIGHT		
Total weight	kg	81

\* Sound pressure level at 3m from the jet fans under the free field conditions at an angle of 45°  
 \*\* Complete jet fan is certified according EN 12101 part 3



DIMENSIONS	A [mm]	B [mm]	C [mm]	F [mm]	G [mm]	H [mm]	I [mm]
CGF 500	1297	908	269	858	790	545	509

Data subject to change